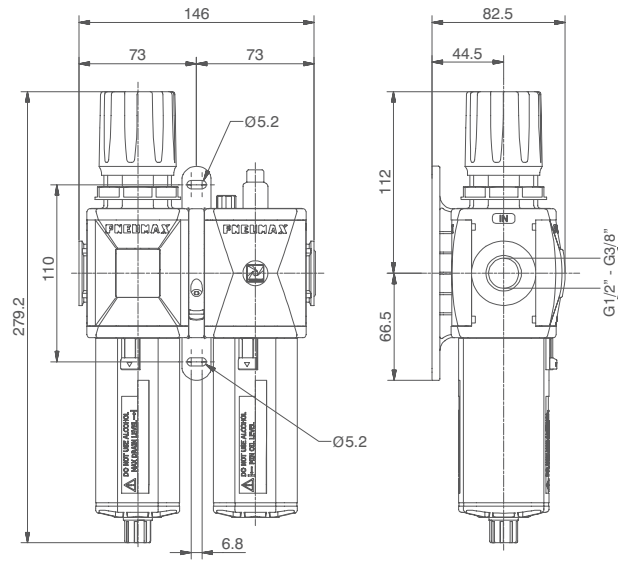
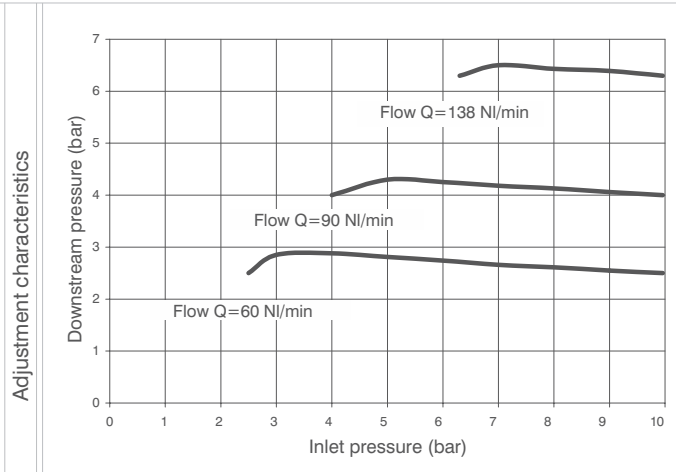
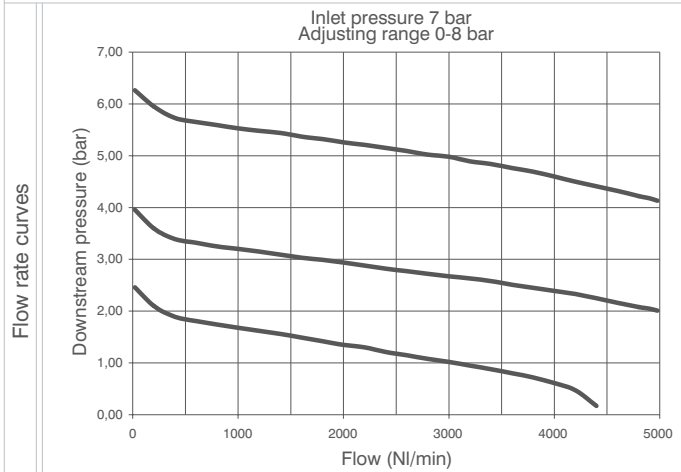




Service unit assembled (EM+L) (E+L) (EW+L)



Example : GT173BHG : size 3, combined group comprising Filter-regulator and Lubricator, Technopolymer threads, G1/2" connections, 0 to 8 bar adjusting range and 20 µm filter pore size

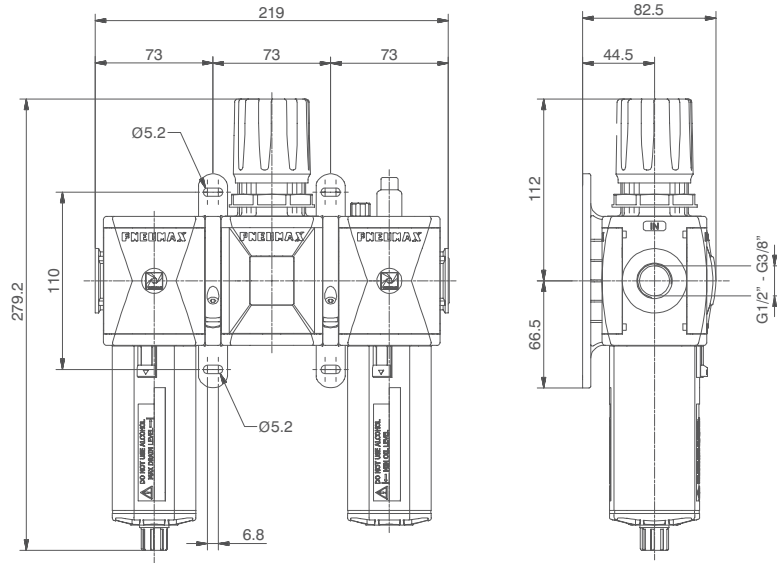


Operational characteristics	Technical characteristics		Ordering code
Combined group comprising Filter-regulator with built in manometer and Lubricator assembled with a (Y) type coupling kit for panel mounting.	Connections	G 3/8" - G 1/2"	GV173CTSOD
Integrated manometer 0-12 bar as standard (for 0-8 and 0-12 bar range) and 0-4 bar (for 0-2 and 0-4 range)	Max. inlet pressure	13 bar	
Note The pressure must be always regulating while increasing. For a more precise regulation and higher sensibility, the use of a regulator with a pressure range as close as possible to the regulated pressure is recommended.	Working temperature	-5°C + 50°C	VERSION
		Weight with Technopolymer threads	gr. 809
	Weight with threaded inserts	gr. 849	CONNECTIONS
	Pressure range	0-2 bar / 0-4 bar 0-8 bar / 0-12 bar	A = G3/8" (only for "N" version) B = G1/2" C = G1/2" NPT (only for "N" version)
	Filter pore size	5 µm - 20 µm - 50 µm	TYPE
	Bowl capacity	68 cm ³	H = Built in gauge J = G1/8" gauge connection
	Indicative oil drip rate	1 drop every 300/600 NI	FILTER PORE SIZE
	Oil type	FD22 - HG32	ADJUSTING RANGE
	Bowl capacity	136 cm ³	C = 5 µm / 0-8 bar D = 5 µm / 0-12 bar G = 20 µm / 0-8 bar H = 20 µm / 0-12 bar N = 50 µm / 0-8 bar P = 50 µm / 0-12 bar
	Assembly positions	Vertical	OPTIONS
	Max. fitting torque (with Technopolymer threads)	G1/2" = 22 Nm	= Standard *
	Max. fitting torque (with threaded inserts)	G3/8" = 25 Nm G1/2" = 30 Nm	A = Min.oil level indicator NO C = Min.oil level indicator NC S = Automatic drain
	Min. operational flow at 6,3 bar	100 NI/min.	SA = Automatic drain + Min.oil level indicator NO SC = Automatic drain + Min.oil level indicator NC
			FLOW DIRECTION
			= Standard (from left to right)
			W = from right to left

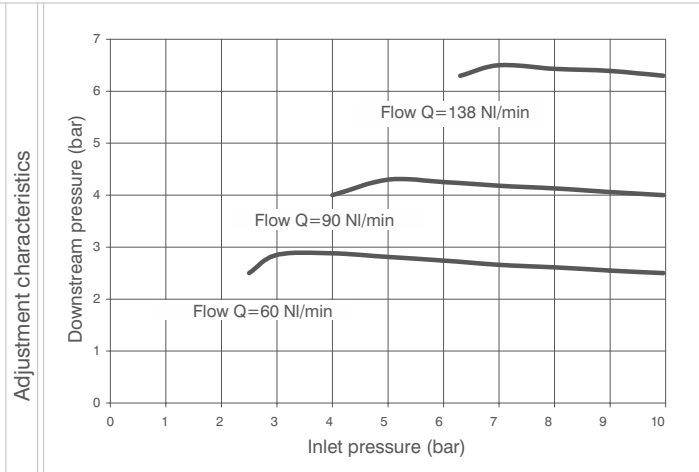
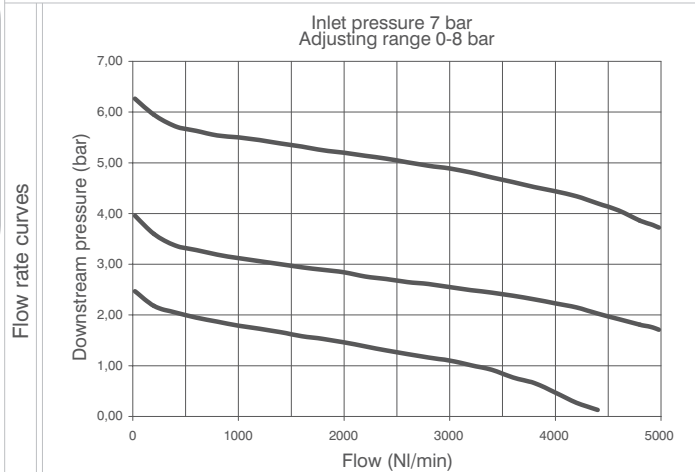
* no additional letter required



Service unit assembled (F+RM+L) (F+R+L) (F+RW+L)



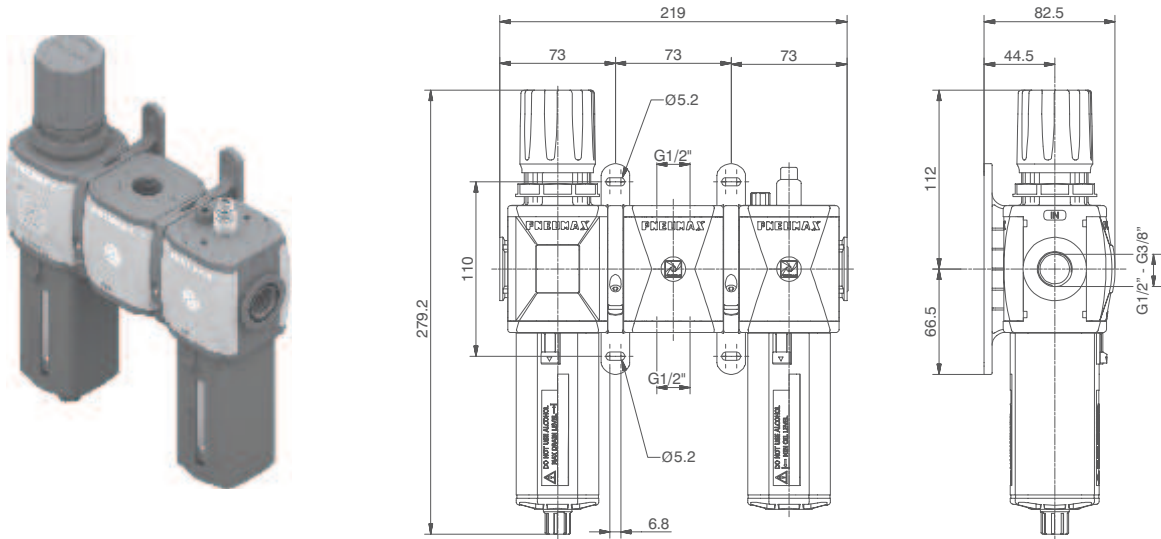
Example : GT173BKG : size 3 combined group comprising Filter, Regulator and Lubricator Technopolymer threads, G1/2" connections, 0 to 8 bar adjusting range and 20 µm filter pore size



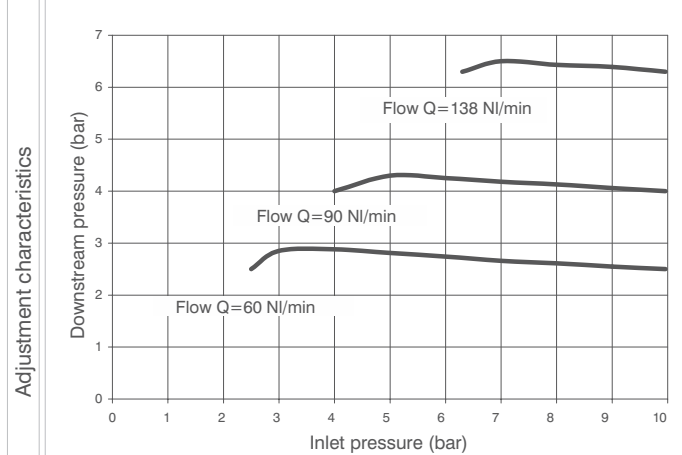
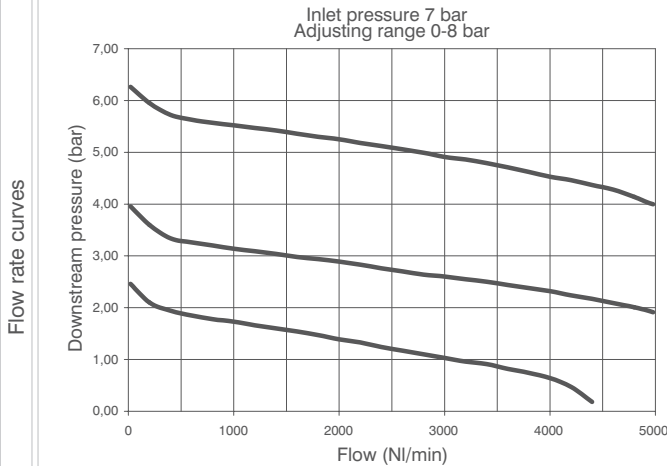
Operational characteristics	Technical characteristics		Ordering code
Combined group comprising Filter, Regulator with built in manometer and Lubricator assembled with two (Y) type coupling kits for panel mounting.	Connections	G 3/8" - G 1/2"	GV173CTSO0
Integrated manometer 0-12 bar as standard (for 0-8 and 0-12 bar range) and 0-4 bar (for 0-2 and 0-4 range)	Max. inlet pressure	13 bar	
Note The pressure must be always regulating while increasing. For a more precise regulation and higher sensibility, the use of a regulator with a pressure range as close as possible to the regulated pressure is recommended.	Working temperature	-5°C +50°C	VERSION
	Weight with Technopolymer threads	gr. 1058	N = Metal inserts
	Weight with threaded inserts	gr. 1118	T = Technopolymer thread
	Pressure range	0-2 bar / 0-4 bar 0-8 bar / 0-12 bar	CONNECTIONS
	Filter pore size	5 µm - 20 µm - 50 µm	A = G3/8" (only for "N" version)
	Bowl capacity	68 cm ³	B = G1/2"
	Indicative oil drip rate	1 drop every 300/600 NI	C = G1/2" NPT (only for "N" version)
	Oil type	FD22 - HG32	TYPE
	Bowl capacity	136 cm ³	T = Built in gauge
	Assembly positions	Vertical	T = G1/8" gauge connection
	Max. fitting torque (with Technopolymer threads)	G1/2" = 22 Nm	FILTER PORE SIZE
	Max. fitting torque (with threaded inserts)	G3/8" = 25 Nm G1/2" = 30 Nm	ADJUSTING RANGE
			C = 5 µm / 0-8 bar
			D = 5 µm / 0-12 bar
			G = 20 µm / 0-8 bar
			H = 20 µm / 0-12 bar
			N = 50 µm / 0-8 bar
			P = 50 µm / 0-12 bar
			OPTIONS
			= Standard *
			A = Min.oil level indicator NO
			C = Min.oil level indicator NC
			S = Automatic drain
			SA = Automatic drain + Min.oil level indicator NO
			SC = Automatic drain + Min.oil level indicator NC
			FLOW DIRECTION
			= Standard (from left to right)
			D = from right to left
	Min. operational flow at 6,3 bar	100 NI/min.	

* no additional letter required

Service unit assembled (EM+PA+L) (E+PA+L) (EW+PA+L)



Example : GT173BNG : size 3 combined group comprising Filter-regulator, Air intake and Lubricator Technopolymer threads, G1/2" connections, 0 to 8 bar adjusting range and 20 µm filter pore size



Operational characteristics

Combined group comprising Filter-regulator with built in manometer, Air intake and Lubricator assembled with two (Y) type coupling kits for panel mounting. Integrated manometer 0-12 bar as standard (for 0-8 and 0-12 bar range) and 0-4 bar (for 0-2 and 0-4 range)

Note

The pressure must be always regulating while increasing. For a more precise regulation and higher sensibility, the use of a regulator with a pressure range as close as possible to the regulated pressure is recommended.

Technical characteristics

Connections	G 3/8" - G 1/2"
Max. inlet pressure	13 bar
Working temperature	-5°C +50°C
Weight with Technopolymer threads	gr. 999
Weight with threaded inserts	gr. 1039
Pressure range	0-2 bar / 0-4 bar 0-8 bar / 0-12 bar
Filter pore size	5 µm - 20 µm - 50 µm
Bowl capacity	68 cm ³
Indicative oil drip rate	1 drop every 300/600 NI
Oil type	FD22 - HG32
Bowl capacity	136 cm ³
Assembly positions	Vertical
Max. fitting torque (with Technopolymer threads)	G1/2" = 22 Nm
Max. fitting torque (with threaded inserts)	G3/8" = 25 Nm G1/2" = 30 Nm
Min. operational flow at 6,3 bar	100 NI/min.

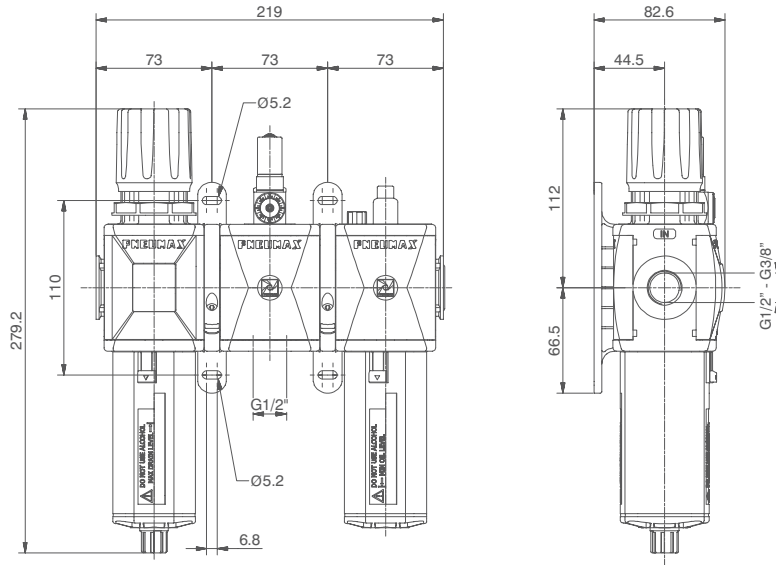
Ordering code

GV173CTS0D

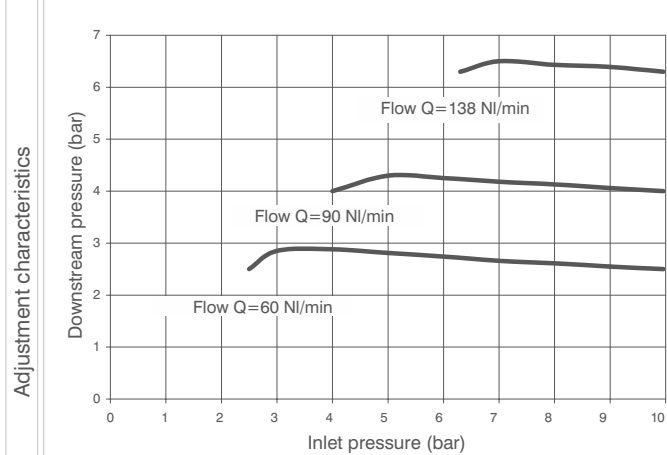
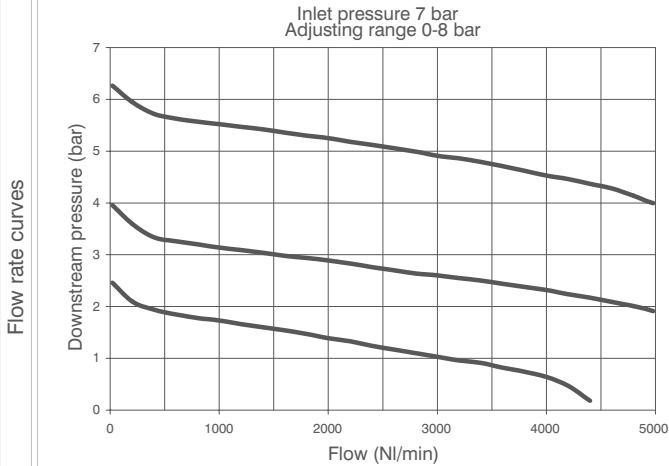
V	VERSION N = Metal inserts T = Technopolymer thread
C	CONNECTIONS A = G3/8" (only for "N" version) B = G1/2" C = G1/2" NPT (only for "N" version)
T	TYPE N = Built in gauge P = G1/8" gauge connection
S	FILTER PORE SIZE ADJUSTING RANGE C = 5 µm / 0-8 bar D = 5 µm / 0-12 bar G = 20 µm / 0-8 bar H = 20 µm / 0-12 bar N = 50 µm / 0-8 bar P = 50 µm / 0-12 bar
O	OPTIONS = Standard * A = Min.oil level indicator NO C = Min.oil level indicator NC S = Automatic drain SA = Automatic drain + Min.oil level indicator NO SC = Automatic drain + Min.oil level indicator NC
D	FLOW DIRECTION = Standard (from left to right) W = from right to left

* no additional letter required

Service unit assembled (EM+PP+L) (E+PP+L) (EW+PP+L)



Example : GT173BRG : size 3 combined group comprising Filter-Regulator, Pressure switch and Lubricator Technopolymer threads, G1/2" connections 0 to 8 bar adjusting range and 20 µm filter pore size



Operational characteristics

Combined group comprising Filter-regulator with built in manometer, Pressure switch and Lubricator assembled with two (Y) type coupling kits for panel mountings. Integrated manometer 0-12 bar as standard (for 0-8 and 0-12 bar range) and 0-4 bar (for 0-2 and 0-4 range)

Note

The pressure must be always regulating while increasing. For a more precise regulation and higher sensibility, the use of a regulator with a pressure range as close as possible to the regulated pressure is recommended.

Technical characteristics

Connections	G 3/8" - G 1/2"
Max. inlet pressure	13 bar
Working temperature	-5°C +50°C
Weight with Technopolymer threads	gr. 1083
Weight with threaded inserts	gr. 1123
Pressure range	0-2 bar / 0-4 bar 0-8 bar / 0-12 bar
Filter pore size	5 µm - 20 µm - 50 µm
Bowl capacity	68 cm ³
Indicative oil drip rate	1 drop every 300/600 NI
Oil type	FD22 - HG32
Bowl capacity	136 cm ³
Assembly positions	Vertical
Max. fitting torque (with Technopolymer threads)	G1/2" = 22 Nm
Max. fitting torque (with threaded inserts)	G3/8" = 25 Nm G1/2" = 30 Nm
Min. operational flow at 6,3 bar	100 NI/min.

Ordering code

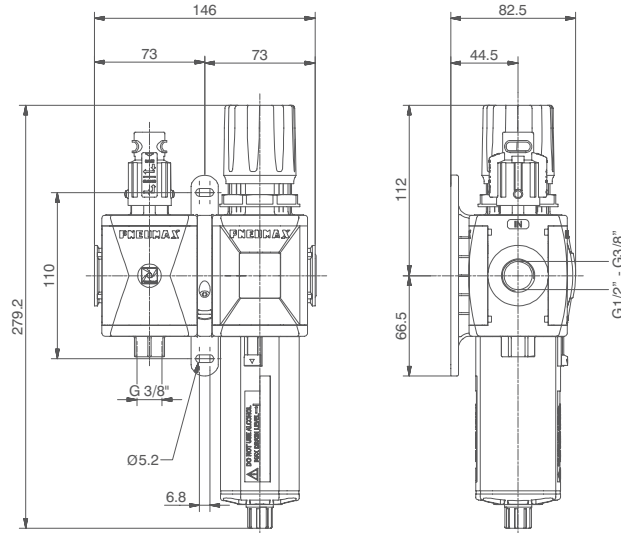
GV173CTSD

VERSION	N = Metal inserts T = Technopolymer thread
CONNECTIONS	A = G3/8" (only for "N" version) B = G1/2" C = G1/2" NPT (only for "N" version)
TYPE	T = Built in gauge C = G1/8" gauge connection
FILTER PORE SIZE	
ADJUSTING RANGE	C = 5 µm / 0-8 bar D = 5 µm / 0-12 bar G = 20 µm / 0-8 bar H = 20 µm / 0-12 bar N = 50 µm / 0-8 bar P = 50 µm / 0-12 bar
OPTIONS	= Standard * A = Min.oil level indicator NO C = Min.oil level indicator NC S = Automatic drain SA = Automatic drain + Min.oil level indicator NO SC = Automatic drain + Min.oil level indicator NC
FLOW DIRECTION	= Standard (from left to right) D = from right to left

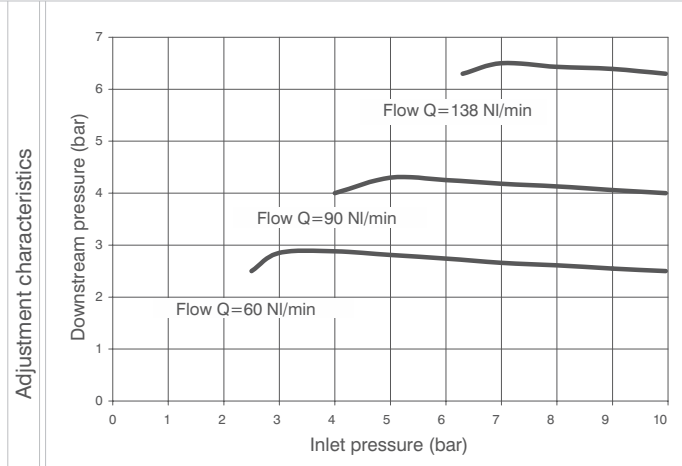
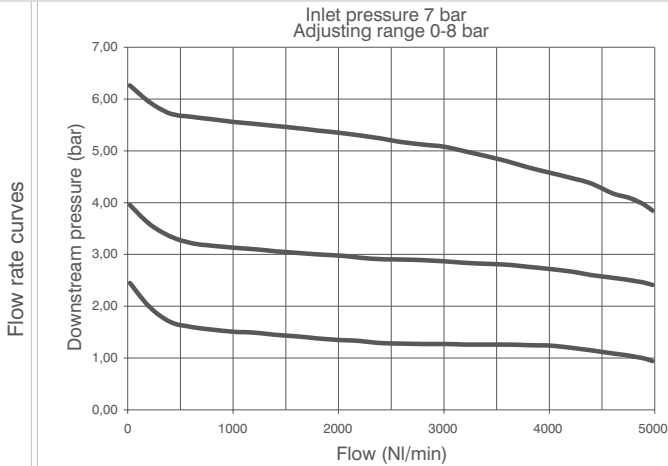
* no additional letter required



Service unit assembled (VL+EM) (VL+E) (VL+EW)



Example : GT173BVGG : size 3 combined group comprising Shut-off valve, Filter-regulator Technopolymer threads, G1/2" connections 0 to 8 bar adjusting range and 20 µm filter pore size

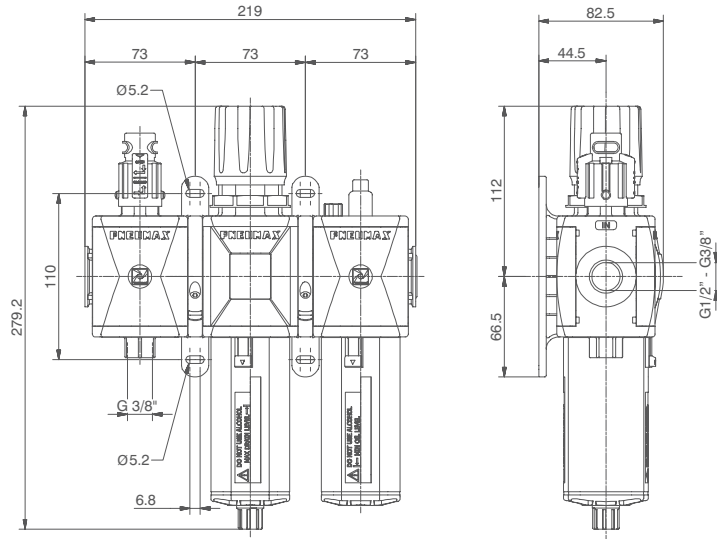


Operational characteristics	Technical characteristics		Ordering code
Combined group comprising manual shut-off valve, Filter - regulator with built in manometer, assembled with one (Y) type coupling kit for panel mountings.	Connections	G 3/8" - G 1/2"	GV173CTS0D
Integrated manometer 0-12 bar as standard (for 0-8 and 0-12 bar range) and 0-4 bar (for 0-2 and 0-4 range)	Max. inlet pressure	13 bar	
Note The pressure must be always regulating while increasing. For a more precise regulation and higher sensibility, the use of a regulator with a pressure range as close as possible to the regulated pressure is recommended.	Working temperature	-5°C +50°C	V VERSION
	Weight with Technopolymer threads	gr. 749	N = Metal inserts
	Weight with threaded inserts	gr. 789	T = Technopolymer thread
	Pressure range	0-2 bar / 0-4 bar 0-8 bar / 0-12 bar	C CONNECTIONS
	Filter pore size	5 µm - 20 µm - 50 µm	A = G3/8" (only for "N" version)
	Bowl capacity	68 cm ³	B = G1/2"
	Indicative oil drip rate	1 drop every 300/600 NI	C = G1/2" NPT (only for "N" version)
	Oil type	FD22 - HG32	T TYPE
	Bowl capacity	136 cm ³	VG = Built in gauge
	Assembly positions	Vertical	VU = G1/8" gauge connection
	Max. fitting torque (with Technopolymer threads)	G1/2" = 22 Nm	S FILTER PORE SIZE
	Max. fitting torque (with threaded inserts)	G3/8" = 25 Nm G1/2" = 30 Nm	ADJUSTING RANGE
	Min. operational flow at 6,3 bar	100 NI/min.	C = 5 µm / 0-8 bar
			D = 5 µm / 0-12 bar
		G = 20 µm / 0-8 bar	
		H = 20 µm / 0-12 bar	
		N = 50 µm / 0-8 bar	
		P = 50 µm / 0-12 bar	
		O OPTIONS	
		= Standard *	
		S = Automatic drain	
		D FLOW DIRECTION	
		= Standard	
		(from left to right)	
		W = from right to left	

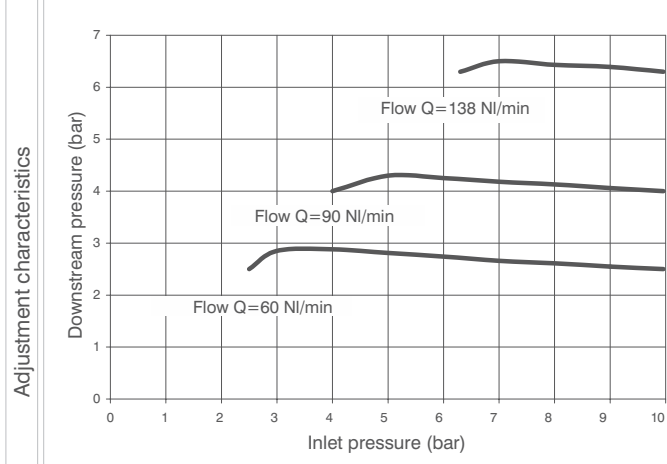
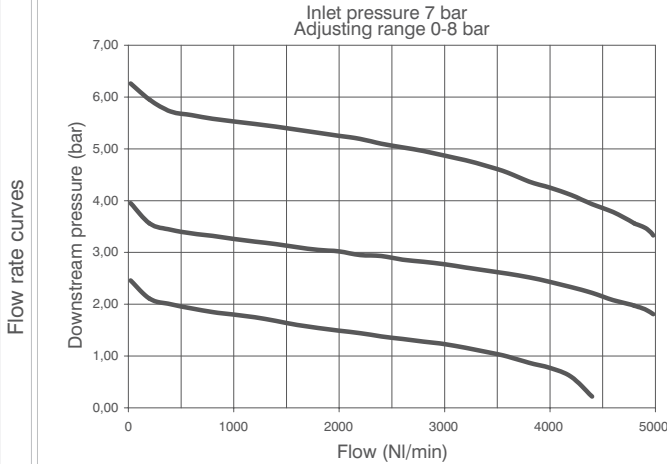
* no additional letter required



Service unit assembled (VL+EM+L) (VL+E+L) (VL+EW+L)



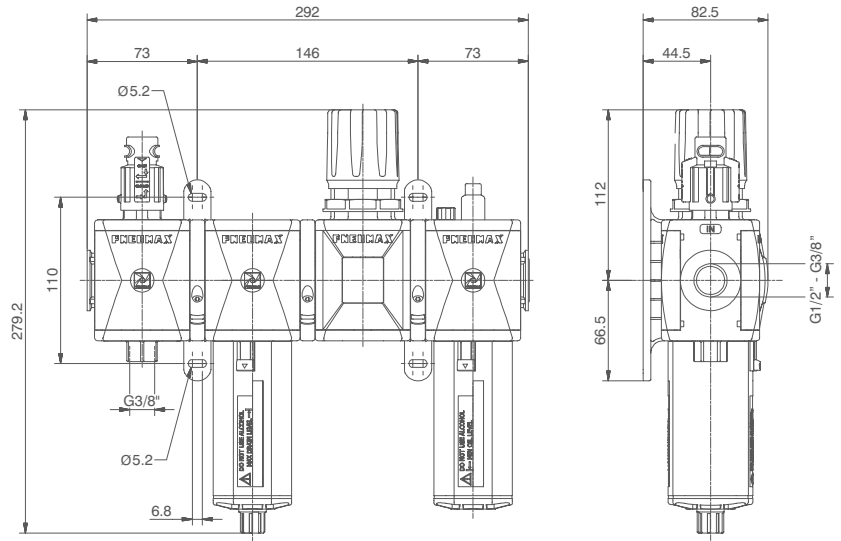
Example : GT173BVHG : Size 3 Combined group comprising Shut-off valve, Filter-regulator and Lubricator Technopolymer threads, G1/2" connections 0 to 8 bar adjusting range and 20 µm filter pore size



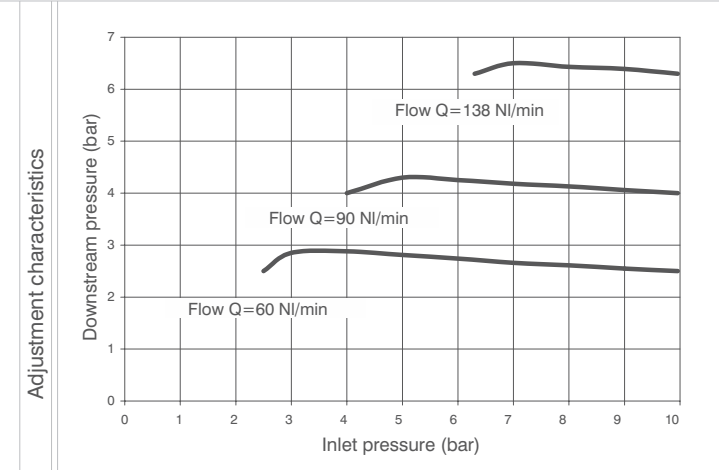
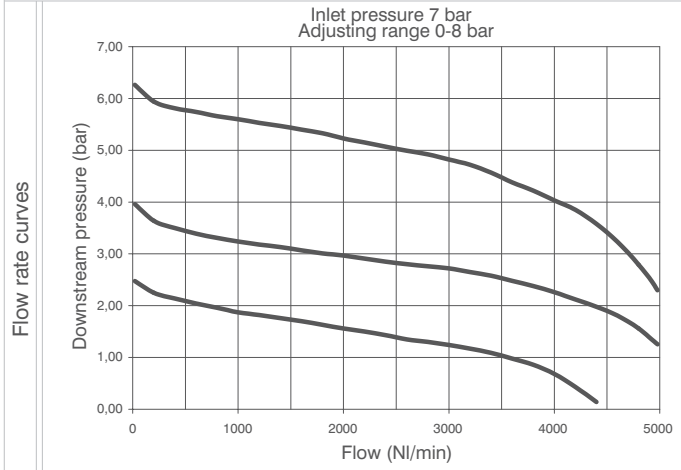
Operational characteristics	Technical characteristics		Ordering code
Combined group comprising manual shut-off valve, Filter - regulator with built in manometer and Lubricator assembled with two(Y) type coupling kits for panel mountings. Integrated manometer 0-12 bar as standard (for 0-8 and 0-12 bar range) and 0-4 bar (for 0-2 and 0-4 range)	Connections	G 3/8" - G 1/2"	GV173CTSO0
	Max. inlet pressure	13 bar	
	Working temperature	-5°C +50°C	VERSION
	Weight with Technopolymer threads	gr. 1078	V N = Metal inserts T = Technopolymer thread
	Weight with threaded inserts	gr. 1138	CONNECTIONS
	Pressure range	0-2 bar / 0-4 bar 0-8 bar / 0-12 bar	C A = G3/8" (only for "N" version) B = G1/2" C = G1/2" NPT (only for "N" version)
	Filter pore size	5 µm - 20 µm - 50 µm	TYPE
	Bowl capacity	68 cm ³	T VH = Built in gauge VJ = G1/8" gauge connection
	Indicative oil drip rate	1 drop every 300/600 NI	FILTER PORE SIZE
	Oil type	FD22 - HG32	ADJUSTING RANGE
	Bowl capacity	136 cm ³	S C = 5 µm / 0-8 bar D = 5 µm / 0-12 bar G = 20 µm / 0-8 bar H = 20 µm / 0-12 bar N = 50 µm / 0-8 bar P = 50 µm / 0-12 bar
	Assembly positions	Vertical	OPTIONS
	Max. fitting torque (with Technopolymer threads)	G1/2" = 22 Nm	= Standard *
	Max. fitting torque (with threaded inserts)	G3/8" = 25 Nm G1/2" = 30 Nm	A = Min.oil level indicator NO C = Min.oil level indicator NC
	Min. operational flow at 6,3 bar	100 NI/min.	O S = Automatic drain SA = Automatic drain + Min.oil level indicator NO SC = Automatic drain + Min.oil level indicator NC
			FLOW DIRECTION
			D = Standard (from left to right) W = from right to left

* no additional letter required

Service unit assembled (VL+F+RM+L) (VL+F+R+L) (VL+F+RW+L)

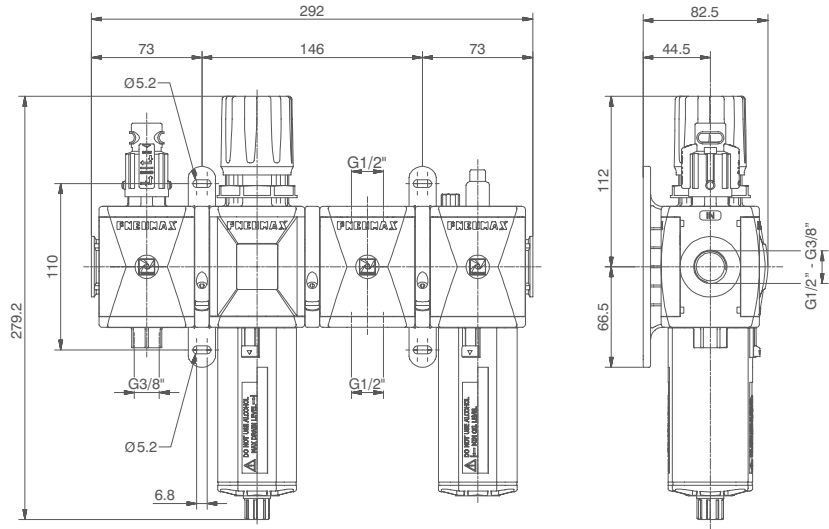


Example : GT173BVKG : size 3 combined group comprising Shut-off valve, Filter, Regulator and Lubricator Technopolymer threads, G1/2" connections 0 to 8 bar adjusting range and 20 µm filter pore size

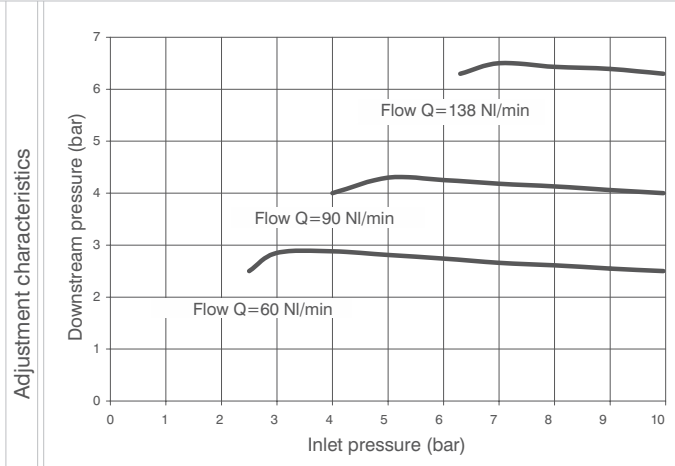
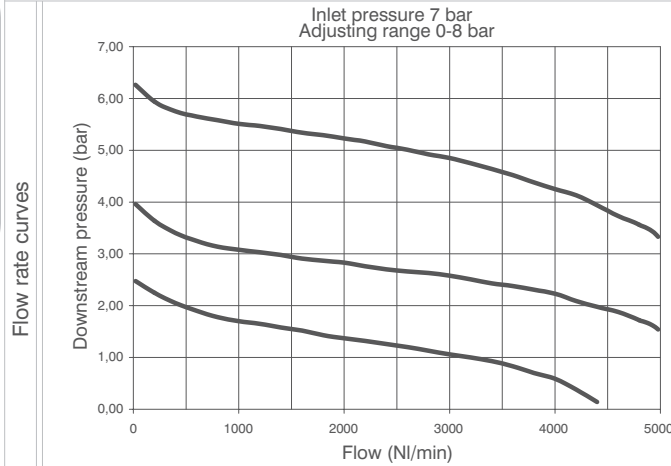


Operational characteristics	Technical characteristics		Ordering code
Combined group comprising Manual shut-off valve, Filter, Regulator with built in manometer and Lubricator , assembled with two (Y) type coupling kits for panel mounting and one (X) type coupling kit.	Connections	G 3/8" - G 1/2"	GV173CTSOD
Integrated manometer 0-12 bar as standard (for 0-8 and 0-12 bar range) and 0-4 bar (for 0-2 and 0-4 range)	Max. inlet pressure	13 bar	
Note The pressure must be always regulating while increasing. For a more precise regulation and higher sensibility, the use of a regulator with a pressure range as close as possible to the regulated pressure is recommended.	Working temperature	-5°C +50°C	VERSION
	Weight with Technopolymer threads	gr. 1308	N = Metal inserts
	Weight with threaded inserts	gr. 1388	T = Technopolymer thread
	Pressure range	0-2 bar / 0-4 bar 0-8 bar / 0-12 bar	CONNECTIONS
	Filter pore size	5 µm - 20 µm - 50 µm	A = G3/8" (only for "N" version)
	Bowl capacity	68 cm ³	B = G1/2"
	Indicative oil drip rate	1 drop every 300/600 NI	C = G1/2" NPT (only for "N" version)
	Oil type	FD22 - HG32	TYPE
	Bowl capacity	136 cm ³	T = Built in gauge
	Assembly positions	Vertical	VT = G1/8" gauge connection
Max. fitting torque (with Technopolymer threads)	G1/2" = 22 Nm	FILTER PORE SIZE ADJUSTING RANGE	
Max. fitting torque (with threaded inserts)	G3/8" = 25 Nm G1/2" = 30 Nm	C = 5 µm / 0-8 bar	
Min. operational flow at 6,3 bar	100 NI/min.	D = 5 µm / 0-12 bar	
		G = 20 µm / 0-8 bar	
* no additional letter required		H = 20 µm / 0-12 bar	
		N = 50 µm / 0-8 bar	
		P = 50 µm / 0-12 bar	
		OPTIONS	
		= Standard *	
		A = Min.oil level indicator NO	
		C = Min.oil level indicator NC	
		S = Automatic drain	
		SA = Automatic drain + Min.oil level indicator NO	
		SC = Automatic drain + Min.oil level indicator NC	
		FLOW DIRECTION	
		= Standard (from left to right)	
		W = from right to left	

Service unit assembled (VL+EM+PA+L) (VL+E+PA+L) (VL+EW+PA+L)



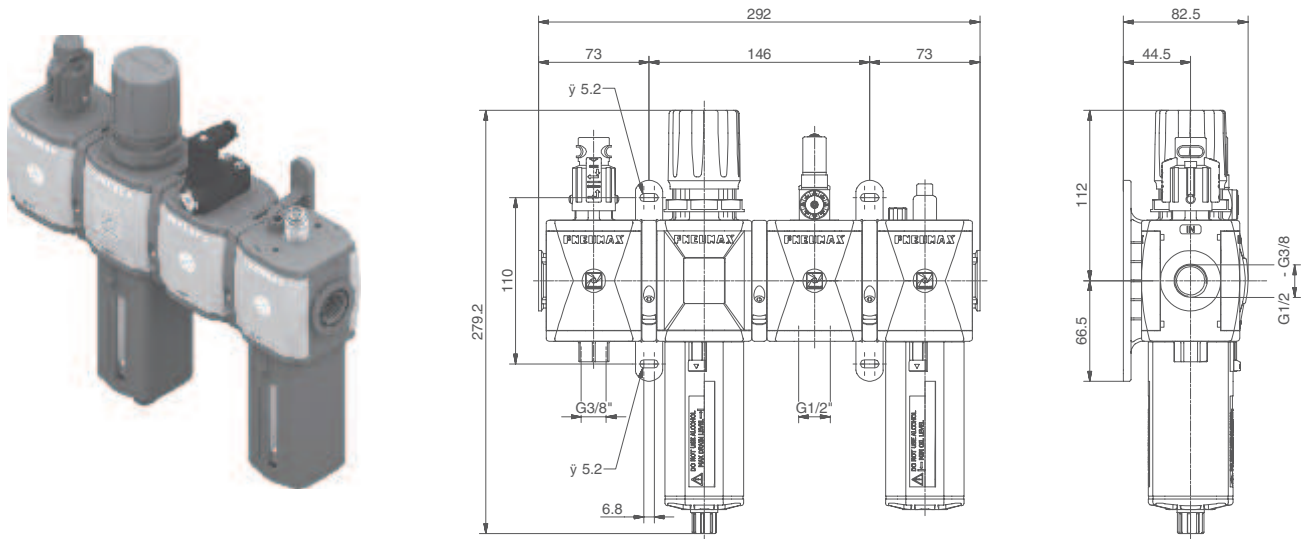
Example : GT173BVNG : size 3 combined group comprising Shut-off valve, Filter-regulator, Air intake and Lubricator Technopolymer threads, G1/2" connections 0 to 8 bar adjusting range and 20 µm filter pore size



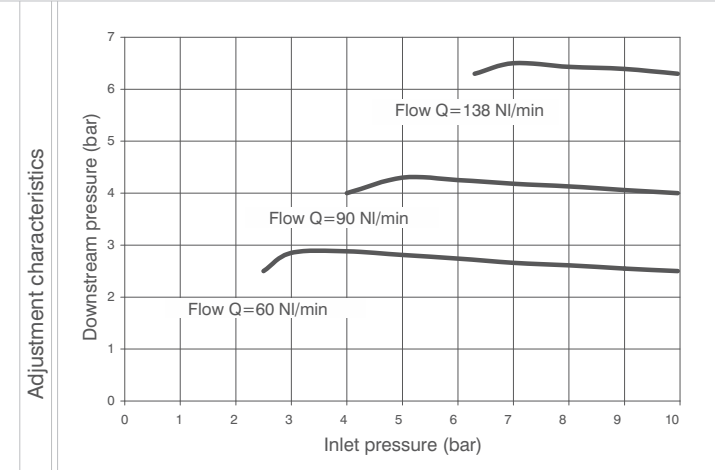
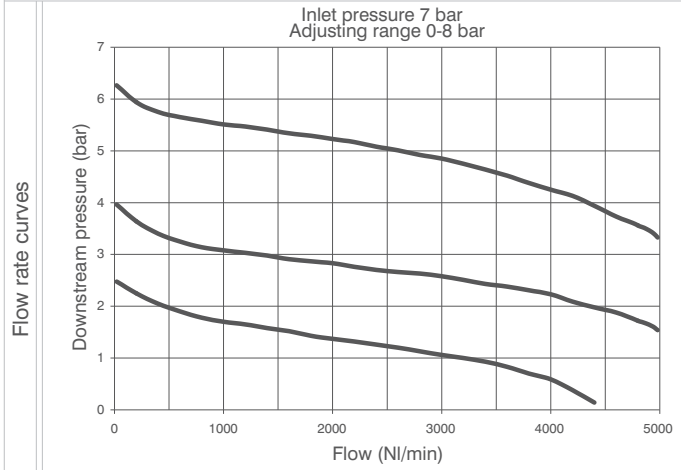
Operational characteristics	Technical characteristics		Ordering code
Combined group comprising manual shut-off valve, Filter - regulator with built in manometer, Air intake and Lubricator, assembled with two (Y) type coupling kits for panel mounting and one (X) type coupling kit.	Connections	G 3/8" - G 1/2"	GV173CTSO0
Integrated manometer 0-12 bar as standard (for 0-8 and 0-12 bar range) and 0-4 bar (for 0-2 and 0-4 range)	Max. inlet pressure	13 bar	
Note The pressure must be always regulating while increasing. For a more precise regulation and higher sensibility, the use of a regulator with a pressure range as close as possible to the regulated pressure is recommended.	Working temperature	-5°C +50°C	V VERSION
	Weight with Technopolymer threads	gr. 1249	N = Metal inserts
	Weight with threaded inserts	gr. 1309	T = Technopolymer thread
	Pressure range	0-2 bar / 0-4 bar 0-8 bar / 0-12 bar	C CONNECTIONS
	Filter pore size	5 µm - 20 µm - 50 µm	A = G3/8" (only for "N" version)
	Bowl capacity	68 cm ³	B = G1/2"
	Indicative oil drip rate	1 drop every 300/600 NI	C = G1/2" NPT (only for "N" version)
	Oil type	FD22 - HG32	T TYPE
	Bowl capacity	136 cm ³	VN = Built in gauge
	Assembly positions	Vertical	VP = G1/8" gauge connection
	Max. fitting torque (with Technopolymer threads)	G1/2" = 22 Nm	S FILTER PORE SIZE
	Max. fitting torque (with threaded inserts)	G3/8" = 25 Nm G1/2" = 30 Nm	ADJUSTING RANGE
			C = 5 µm / 0-8 bar
			D = 5 µm / 0-12 bar
			G = 20 µm / 0-8 bar
			H = 20 µm / 0-12 bar
			N = 50 µm / 0-8 bar
			P = 50 µm / 0-12 bar
			O OPTIONS
			= Standard *
			A = Min.oil level indicator NO
			C = Min.oil level indicator NC
			S = Automatic drain
			SA = Automatic drain + Min.oil level indicator NO
			SC = Automatic drain + Min.oil level indicator NC
			D FLOW DIRECTION
			= Standard
			(from left to right)
			W = from right to left
	Min. operational flow at 6,3 bar	100 NI/min.	

* no additional letter required

Service unit assembled (VL+EM+PP+L) (VL+E+PP+L) (VL+EW+PP+L)



Example : GT173BVRG : size 3 combined group comprising Shut-off valve, Filter-regulator, Pressure switch and Lubricator Technopolymer threads, G1/2" connections adjusting range 0 to 8 bar and 20 µm filter pore size

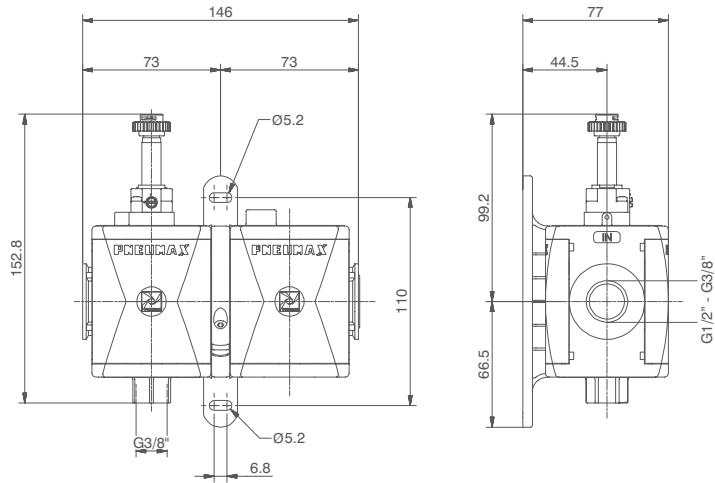


Operational characteristics	Technical characteristics		Ordering code
Combined group comprising manual shut-off valve, Filter - regulator with built in manometer, Pressure switch and Lubricator, assembled with two (Y) type coupling kits for panel mounting and one (X) type coupling kit. Integrated manometer 0-12 bar as standard (for 0-8 and 0-12 bar range) and 0-4 bar (for 0-2 and 0-4 range)	Connections	G 3/8" - G 1/2"	GV173CTS0D
Note The pressure must be always regulating while increasing. For a more precise regulation and higher sensibility, the use of a regulator with a pressure range as close as possible to the regulated pressure is recommended.	Max. inlet pressure	13 bar	
	Working temperature	-5°C + 50°C	VERSION N = Metal inserts T = Technopolymer thread
	Weight with Technopolymer threads	gr. 1333	
	Weight with threaded inserts	gr. 1393	CONNECTIONS
	Pressure range	0-2 bar / 0-4 bar 0-8 bar / 0-12 bar	A = G3/8" (only for "N" version) B = G1/2" C = G1/2" NPT (only for "N" version)
	Filter pore size	5 µm - 20 µm - 50 µm	TYPE
	Bowl capacity	68 cm ³	VR = Built in gauge VC = G1/8" gauge connection
	Indicative oil drip rate	1 drop every 300/600 NI	FILTER PORE SIZE ADJUSTING RANGE
	Oil type	FD22 - HG32	C = 5 µm / 0-8 bar D = 5 µm / 0-12 bar G = 20 µm / 0-8 bar H = 20 µm / 0-12 bar N = 50 µm / 0-8 bar P = 50 µm / 0-12 bar
	Bowl capacity	136 cm ³	OPTIONS = Standard * A = Min.oil level indicator NO C = Min.oil level indicator NC S = Automatic drain SA = Automatic drain + Min.oil level indicator NO SC = Automatic drain + Min.oil level indicator NC
	Assembly positions	Vertical	
	Max. fitting torque (with Technopolymer threads)	G1/2" = 22 Nm	FILTER DIRECTION = Standard (from left to right) W = from right to left
	Max. fitting torque (with threaded inserts)	G3/8" = 25 Nm G1/2" = 30 Nm	
Min. operational flow at 6,3 bar	100 NI/min.		

* no additional letter required



Service unit assembled (VE+AP)



Example : GT173BSB2 : size 3 combined group comprising Electric shut-off valve, Progressive start-up valve without coil with M2 pilot Technopolymer threads, G1/2" connections

Operational characteristics	Technical characteristics		Ordering code
Combined group comprising Electric shut - off valve and Progressive start-up valve assembled with a (Y) type coupling kit for panel mounting.	Connections	G 3/8" - G 1/2"	GV173CSA VERSION N = Metal inserts T = Technopolymer thread CONNECTIONS A = G3/8" (only for "N" version) B = G1/2" C = G1/2" NPT (only for "N" version) 15 mm COIL VOLTAGE A4 = 12 V DC A5 = 24 V DC A6 = 24 V AC (50-60 Hz) A7 = 110 V AC (50-60 Hz) A8 = 220 V AC (50-60 Hz) A9 = 24 V DC (1 Watt) 22 mm COIL VOLTAGE B2 = Without coil M2 mechanic A B4 = 12 V DC B5 = 24 V DC B6 = 24 V AC (50-60 Hz) B7 = 110 V AC (50-60 Hz) B8 = 220 V AC (50-60 Hz) B9 = 24 V DC (2 Watt) 30 mm COIL VOLTAGE C5 = 24 V DC C6 = 24 V AC (50-60 Hz) C7 = 110 V AC (50-60 Hz) C8 = 230 V AC (50-60 Hz) C9 = 24 V DC (2 Watt)
	Max. inlet pressure	10 bar	
	Min. inlet pressure	2.5 bar	
	Working temperature	-5°C +50°C	
	Weight with Technopolymer threads	gr. 549	
	Weight with threaded inserts	gr. 589	
	Assembly positions	Indifferent	
	Max. fitting torque (with Technopolymer threads)	G1/2" = 22 Nm	
	Max. fitting torque (with threaded inserts)	G3/8" = 25 Nm G1/2" = 30 Nm	
	Flow at 6 bar with Δp=1	2800 NI/min.	

3